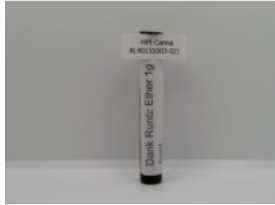




Certificate of Analysis

FOR COMPLIANCE



Sample:AL40131003-021
Harvest/Lot ID: DK03024PRE1G-RE01
Batch#: DK03024PRE1G-RE01
Sample Size Received: 20 units
Total Amount: 10000 units
Retail Product Size: 1 gram
Retail Serving Size: 0.5 gram
Servings: 2
Sampled: 01/31/24 01:00 PM
Sampling Start: 01:00 PM
Sampling End: 02:30 PM
Revision Date: 05/20/24
Sampling Method: SOP.T.20.010.NY

HPI Canna Inc
License # : OCM-AUCP-22-000022
886 Noxon Road
Poughkeepsie, NY, 12603, US



PASSED

Pages 1 of 2

SAFETY RESULTS


Pesticides
PASSED


Heavy Metals
PASSED


Microbials
PASSED


Mycotoxins
PASSED


Residuals
Solvents
NOT TESTED


Filtration
PASSED


Water Activity
PASSED


Moisture
PASSED

MISC.

Terpenes
TESTED



Cannabinoid

PASSED



Total THC
30.8445%
Total THC/Container : 308.445 mg



Total CBD
<0.1000
Total CBD/Container : 0.000 mg



Total Cannabinoids
35.4312%
Total Cannabinoids/Container : 354.312 mg

	(6AR,9R) D10-THC	(6AR,9S) D10-THC	CBC	CBD	CBDA	CBDV	CBG	CBGA	CBN	D8-THC	D9-THC	THCA	THCV
%	<0.1000	<0.1000	0.1512	<0.1000	<0.1000	<0.1000	0.1571	0.7875	0.1150	0.1688	6.6060	27.4456	<0.1000
mg/unit	<1.000	<1.000	1.512	<1.000	<1.000	<1.000	1.571	7.875	1.150	1.688	66.060	274.456	<1.000
LOQ	0.1000	0.1000	0.1000	0.1000	0.1000	0.1000	0.1000	0.1000	0.1000	0.1000	0.1000	0.1000	0.1000
%	%	%	%	%	%	%	%	%	%	%	%	%	%

Weight:
1.219g

Analysis Method : SOP.T.30.031.NY, SOP.T.40.031.NY
Analyzed Date : 02/01/24 17:12:48

This Kaycha Labs Certification shall not be reproduced, unless in its entirety, without written approval from Kaycha Labs. The results relate only to the material or product analyzed. ND=Not Detected, ppm=Parts Per Million, ppb=Parts Per Billion, RSD=Relative Standard Deviation. Limit of Detection (LOD) and Limit Of Quantitation (LOQ) are terms used to describe the smallest concentration that can be detected and reliably measured by an analytical procedure, respectively. Action Levels are State determined thresholds based on 9 New York Codes, Rules and Regulations (NYCRR) Part 130 and Cannabis Law. The Measurement of Uncertainty (MU) error is available from the lab upon request. The "Decision Rule" for pass/fail does not include the MU. Any calculated totals may contain rounding errors.

Revision: #2 This revision supersedes any and all previous versions of this document.

Erica Troy
Lab Director

NY Permit # OCM-CPL-2022-00006
ISO 17025 Accreditation # 97164



Signature
02/06/24

Revision: #1 - Report revised to update batch amount.
Revision: #2 - Report revised to correct batch size.



1 Winners Circle
Albany, NY, 12205, US
(833) 465-8378

Kaycha Labs

Dank | Preroll | Runtz Ether | 1g
RUNTZ ETHER
Matrix : Flower
Type: Pre-roll



Certificate of Analysis

PASSED

HPI Canna Inc

886 Noxon Road
Poughkeepsie, NY, 12603, US
Telephone: (845) 533-5363
Email: info@hpicanna.com
License #: OCM-AUCP-22-000022

Sample : AL40131003-021
Harvest/Lot ID: DK03024PRE1G-RE01
Batch #: DK03024PRE1G-RE01 Sample Size Received : 20 units
Sampled : 01/31/24 01:00 PM Total Amount : 10000 units
Sampling Method : SOP.T.20.010.NY

Page 2 of 2



Terpenes

TESTED

Terpenes	LOQ (%)	mg/unit	%	Result (%)	Terpenes	LOQ (%)	mg/unit	%	Result (%)
BETA-CARYOPHYLLENE	0.00	3.7	0.37		Weight:				
ALPHA-HUMULENE	0.00	1.7	0.17		1.0243g				
ALPHA-BISABOLOL	0.00	1.0	0.10		Analysis Method : SOP.T.30.064.NY, SOP.T.40.064.NY				
ALPHA-TERPINEOL	0.00	0.9	0.09		Analyzed Date : 02/01/24 16:31:38				
LINALOOL	0.00	0.9	0.09						
FENCHYL ALCOHOL	0.00	0.7	0.07						
LIMONENE	0.00	0.6	0.06						
CARYOPHYLLENE OXIDE	0.00	0.4	0.04						
VALENCENE	0.00	0.2	0.02						
FARNESENE	0.10	<1.0	<0.10						
OCIMENE	0.00	<0.0	<0.00						
ALPHA-PINENE	0.00	<0.0	<0.00						
BETA-PINENE	0.00	<0.0	<0.00						
CAMPHENE	0.00	<0.0	<0.00						
GERANIOL	0.00	<0.0	<0.00						
GUAJOL	0.00	<0.0	<0.00						
MENTHOL	0.00	<0.0	<0.00						
TERPINOLENE	0.00	<0.0	<0.00						
ALPHA-PHELLANDRENE	0.00	<0.0	<0.00						
ALPHA-TERPINENE	0.00	<0.0	<0.00						
BETA-MYRCENE	0.00	<0.0	<0.00						
Total (%)			1.1						

This Kaycha Labs Certification shall not be reproduced, unless in its entirety, without written approval from Kaycha Labs. The results relate only to the material or product analyzed. ND=Not Detected, ppm=Parts Per Million, ppb=Parts Per Billion, RSD=Relative Standard Deviation. Limit of Detection (LOD) and Limit Of Quantitation (LOQ) are terms used to describe the smallest concentration that can be detected and reliably measured by an analytical procedure, respectively. Action Levels are State determined thresholds based on 9 New York Codes, Rules and Regulations (NYCRR) Part 130 and Cannabis Law. The Measurement of Uncertainty (MU) error is available from the lab upon request. The "Decision Rule" for pass/fail does not include the MU. Any calculated totals may contain rounding errors.

Revision: #2 This revision supersedes any and all previous versions of this document.

Erica Troy
Lab Director

NY Permit # OCM-CPL-2022-00006
ISO 17025 Accreditation # 97164

Signature
02/06/24

Revision: #1 - Report revised to update batch amount.
Revision: #2 - Report revised to correct batch size.